



# Historic Bristol Borough

2025



## TRASH, YARD WASTE & RECYCLING COLLECTION



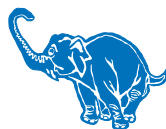
TRASH



YARD WASTE



RECYCLING



**J. P. Mascaro & Sons**

*If it's service, it's us!*

**800-432-1616**

[www.jpмасcaro.com](http://www.jpмасcaro.com)

PRSR STD  
US POSTAGE  
PAID  
DOYLESTOWN, PA  
PERMIT NO. 305

**J. P. Mascaro & Sons**



*If it's service, it's us!*

2650 Audubon Road  
Audubon, PA 19403  
888-MASCARO

# Bristol Borough Service and Collection Days

## Trash Collection

Trash will be collected twice a week on **Tuesday and Friday**. Please have your trash and/or recyclables placed at the curb no earlier than 6 p.m. the evening before collection. Trash must be placed in water-tight trash cans. Up to six (6) trash containers are allowed. Plastic bags are prohibited unless placed inside of trash can. **No Home Construction or Demolition Debris!** Empty cans must be removed from the curb by 7 p.m. on the day of collection. **Please help Keep Historic Bristol Borough clean!**

## Bulk Item Collection

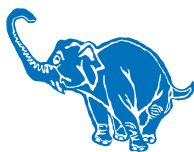
Limit to one (1) bulk item permitted per collection day. Bulk items include carpet (must be cut and tied in 3-foot lengths) household furnishing, bicycles, etc. **Mattresses and box springs must be wrapped in plastic.** White Goods are also classified as bulk items. White goods are stoves, microwaves, washers, etc. Appliances like refrigerators, freezers, air conditioners, etc. that have freon need to arrange a special pick up. **Call 1-800-432-1616** to schedule a collection of white goods that have freon.

## Single Stream Recycling Collection (Tuesday)

**Recycling material is collected one (1) time a week on Tuesday.** Please use either the 30-gallon blue recycling container or 64-gallon recycling cart for collecting single-stream recycling material only. There is no need to separate your recyclables. Please clean and rinse the recycling materials. For a complete list of items that can be recycled, refer to the list on the next page. **DO NOT USE PLASTIC BAGS.**



If you haven't received a free recycling cart, you can request one by calling **484-398-6553**. Please note that due to production issues, these carts will be available and delivered in May 2025. By calling, your household will be added to the list to receive a recycling cart. One cart per household.



**J. P. Mascaro & Sons**

*If it's service, it's us!*

You may also email us at

[customerservice@jpmascaro.com](mailto:customerservice@jpmascaro.com)



Single-stream recycling will be collected by a compaction truck. Only recyclables from your new blue container, will be placed in this truck on your recycling day. The truck cannot collect non-recyclable items.

# Bristol Borough Recycling Collection Information

Below are examples of what can be placed in your new recycling container. If you have any questions about what can be recycled please visit our website at [www.jpмасcaro.com](http://www.jpмасcaro.com)

## Paper, Cardboard, Magazines & Junk Mail



Boxes & Cartons



Paper & Plastic cups



Flattened Cardboard



Newspaper



Phone books



Empty paper bags



Mail, Magazines, Mixed paper

## Plastic #1-#7

### Plastic food containers



Plastic bottles (all colors)



Plastic plant pots



Pill bottles  
(no prescription vials)



Lids (wider than 3 in.)

## Glass



Bottles & Jars

## Metal



Aluminum & metal cans

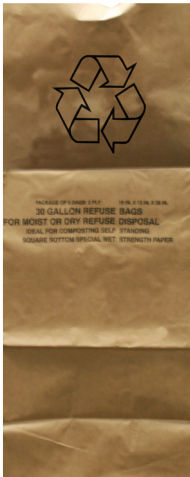
## Foil



Foil & foil trays  
(clean)



## Yard Waste & Leaf Collection



Yard waste will be collected on the 1st Thursday of every month. During the months of April, May and June, yard waste will be collected on the 1st and 3rd Thursday of the month. Leaf collection will be on Thursdays for 6 weeks, beginning in the first week of November. Use only compostable paper bags or open top containers. Each container or bundle cannot exceed the weight limit of 50 lbs. Place yard waste out the night before. Leaves may be placed in open top containers or compostable paper bags. **NO PLASTIC BAGS!**

- **ACCEPTABLE ITEMS:** Tree trimmings up to 2 inch in diameter and 4 feet in length. Shrubbery and hedge trimmings, prunings, garden waste.
- **UNACCEPTABLE ITEMS:** No tree roots. Branches can be no longer than 4 ft. in length or 2 inch in diameter.

## Holiday Schedule Collection

**If your collection day falls on a holiday it will be skipped until the next collection day.**

**Holidays:** New Year's Day (January 1), Memorial Day, Independence Day (July 4), Labor Day, Thanksgiving Day, and Christmas Day (December 25).

## No Electronic Waste

State law prohibits residents from putting covered devices such as televisions, desktop and laptop computers, monitors, keyboard and anything that connects to a computer out for trash collection. You may bring your electronic waste to the Bristol Borough Public Works Department located at 103 Maple Beach Road, Bristol, on Tuesdays and Fridays between 8:00 a.m. and 2:00 p.m. There is an E-Waste marked drop off container, please follow all rules and regulations. You must be a Bristol Borough resident. Please bring proper ID. For more information on collection events go to [www.buckscounty.org/recycling](http://www.buckscounty.org/recycling) or call the Bucks County Planning Commission at 215-345-3400.



### NO HAZARDOUS WASTE!

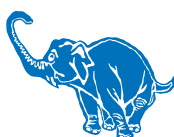


Car batteries, gasoline, motor oil, pesticides, oil-base paints and other toxic and hazardous materials do not belong in the trash! Call the Bucks County Recycling Coordinator/ Environmental Planner at 215-345-3414 for information on disposing of these materials. Many auto stores accept used motor oil and car batteries.

## Questions or Problems?

### Hours of Operation:

Monday thru Friday  
8:30 am to 5:30 pm  
Saturdays 8:30 am to Noon



## J. P. Mascaro & Sons

*If it's service, it's us!*

Call Us during collection hours at **800-432-1616**